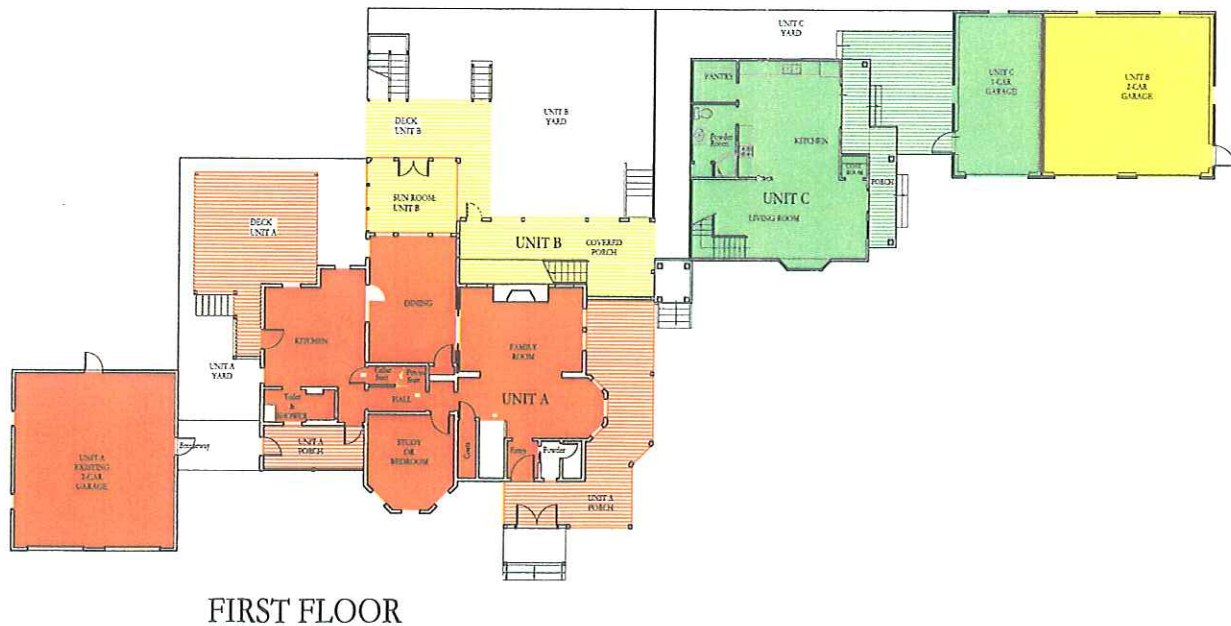
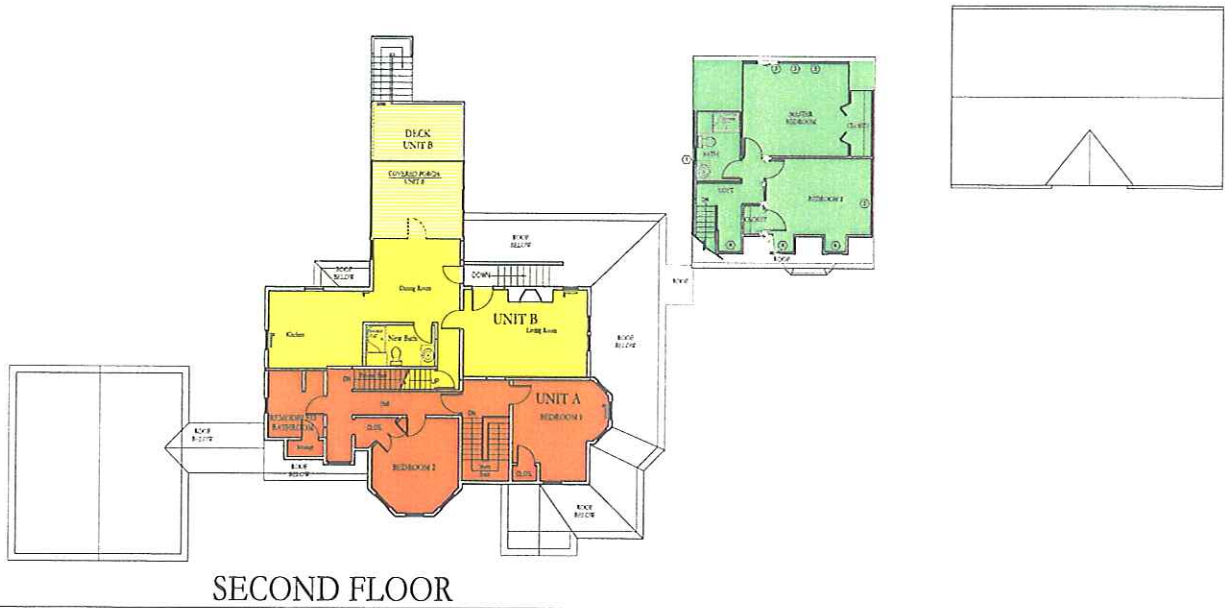
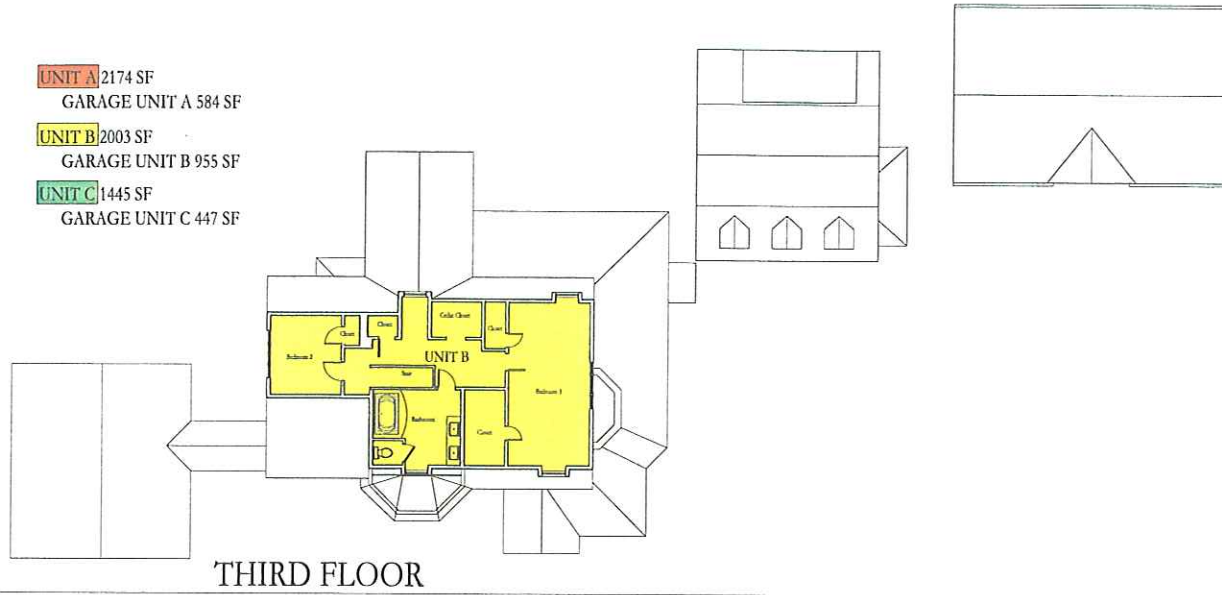


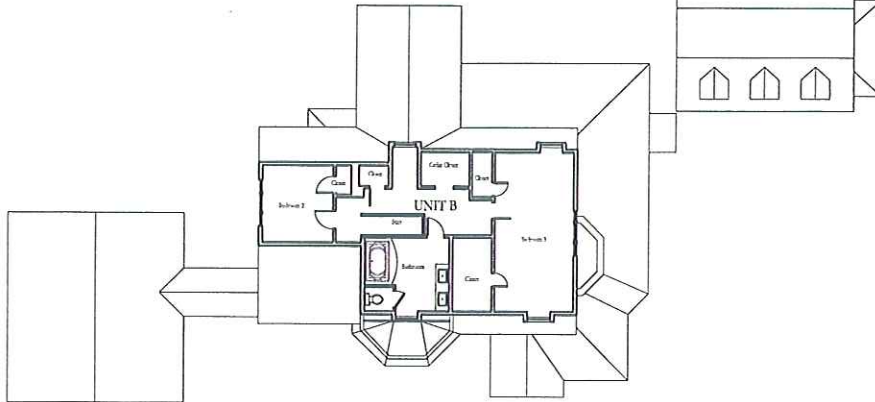
# SUPERINTENDENT'S RESIDENCE FOXBORO, MASSACHUSETTS

- UNIT A 2174 SF  
GARAGE UNIT A 584 SF
- UNIT B 2003 SF  
GARAGE UNIT B 955 SF
- UNIT C 1445 SF  
GARAGE UNIT C 447 SF

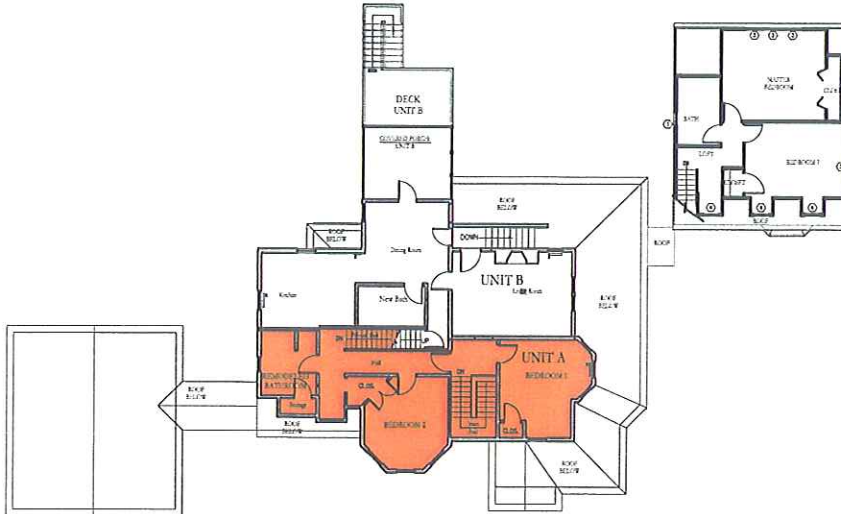


# SUPERINTENDENT'S RESIDENCE FOXBORO, MASSACHUSETTS

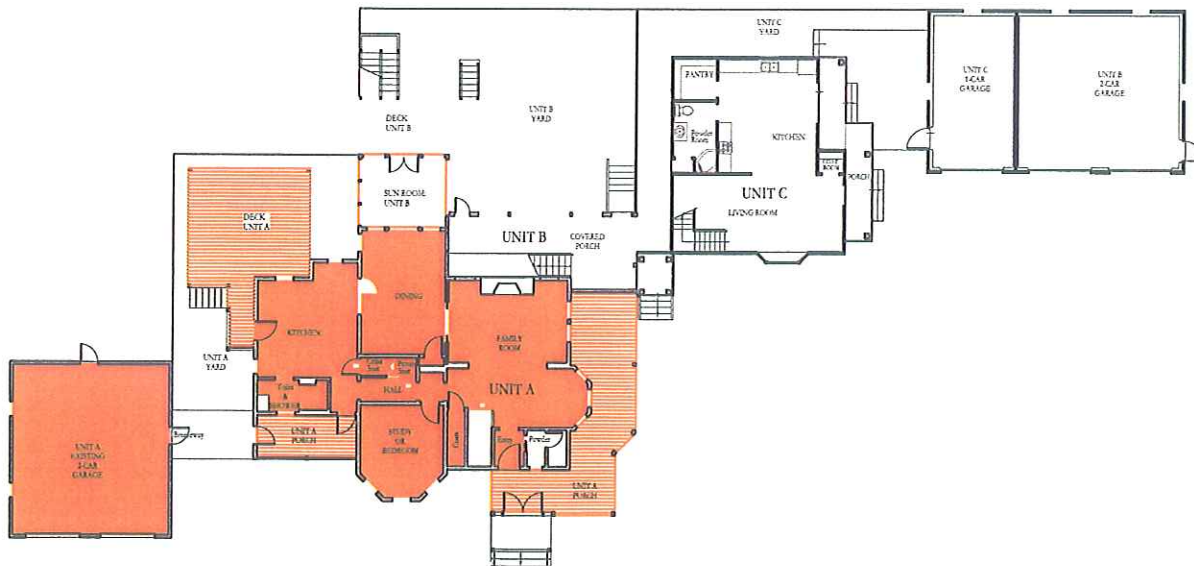
**UNIT A** 2174 SF  
GARAGE UNIT A 584 SF



THIRD FLOOR



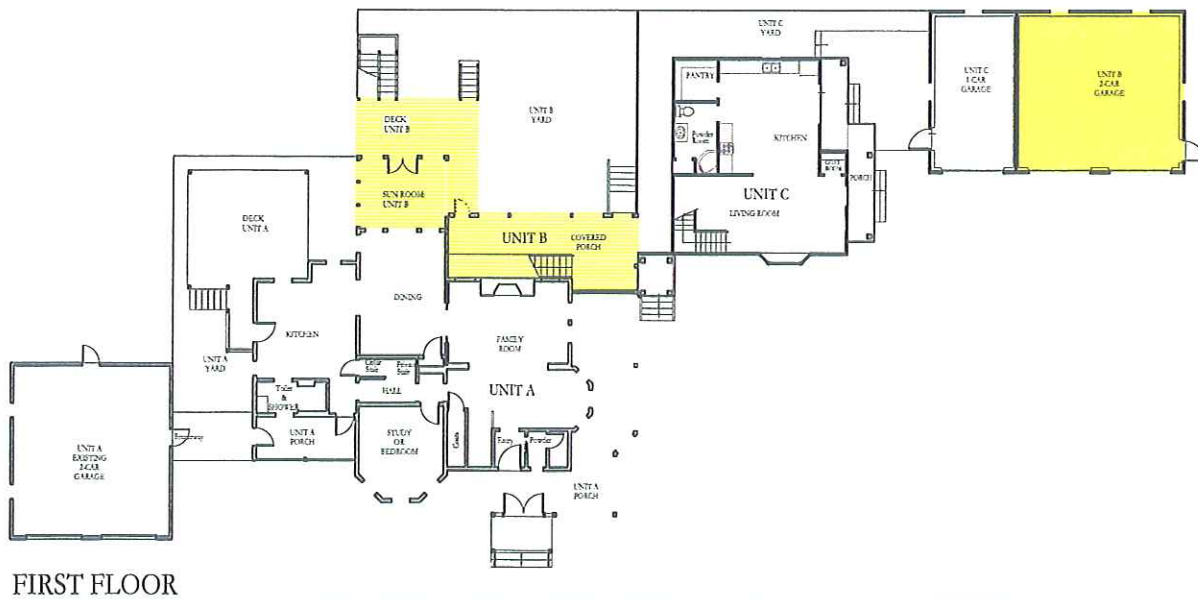
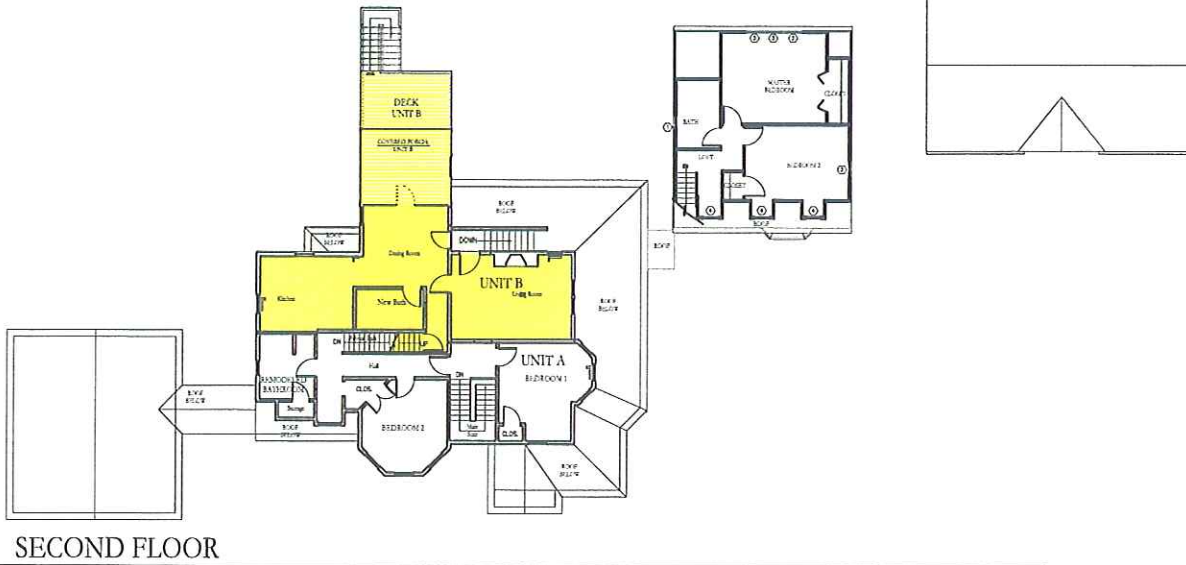
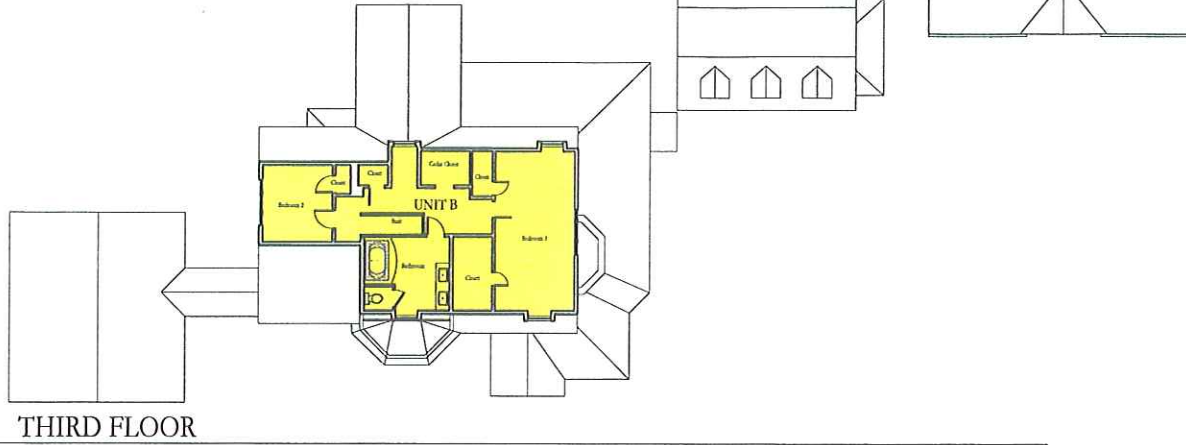
SECOND FLOOR



FIRST FLOOR

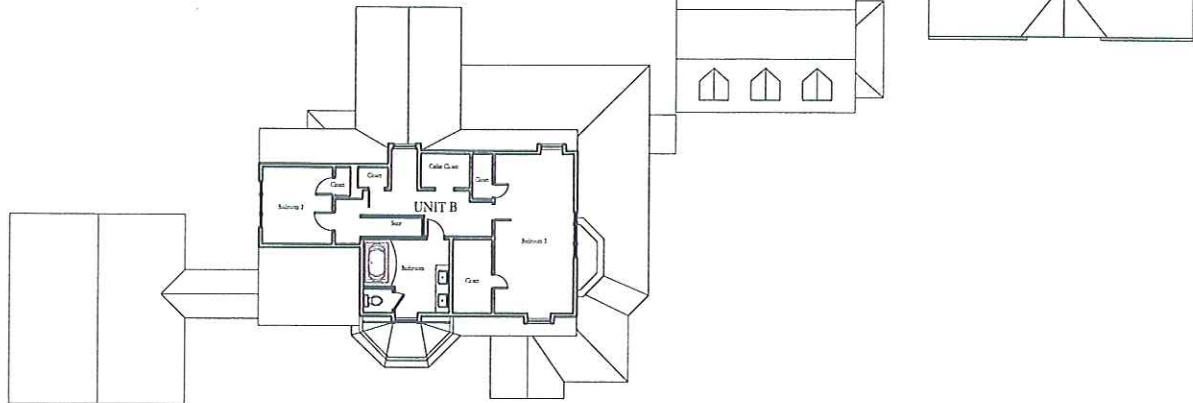
# SUPERINTENDENT'S RESIDENCE FOXBORO, MASSACHUSETTS

**UNIT B** 2003 SF  
GARAGE UNIT B 955 SF

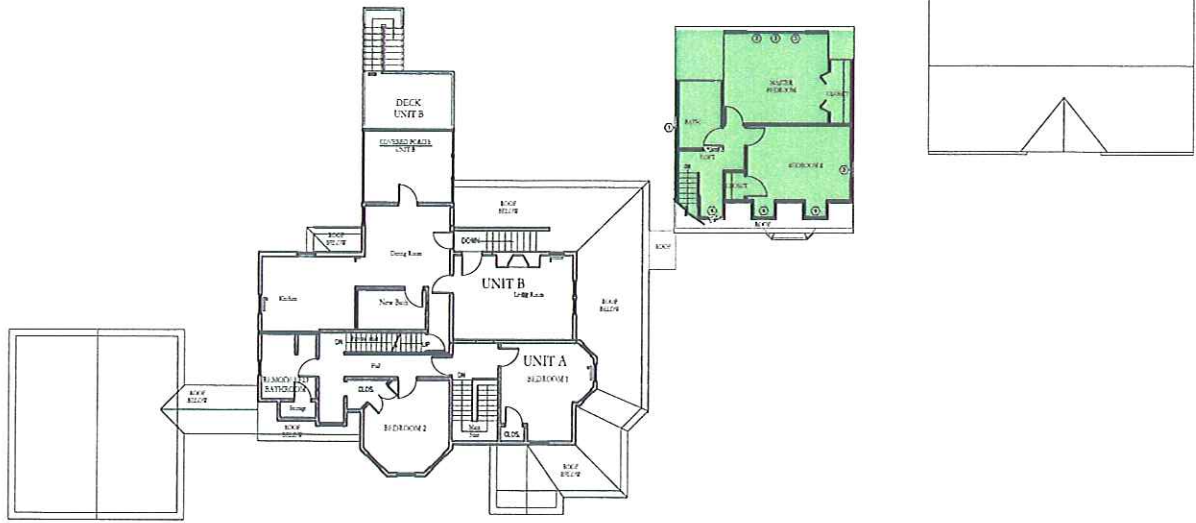


# SUPERINTENDENT'S RESIDENCE FOXBORO, MASSACHUSETTS

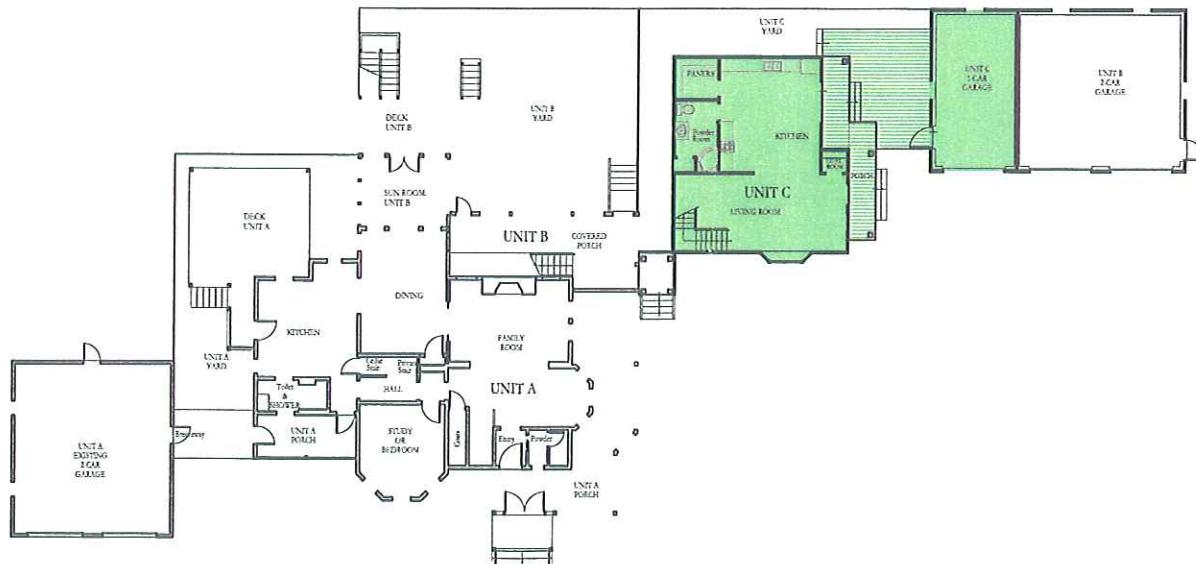
**UNIT C** 1445 SF  
GARAGE UNIT C 447 SF



THIRD FLOOR



SECOND FLOOR

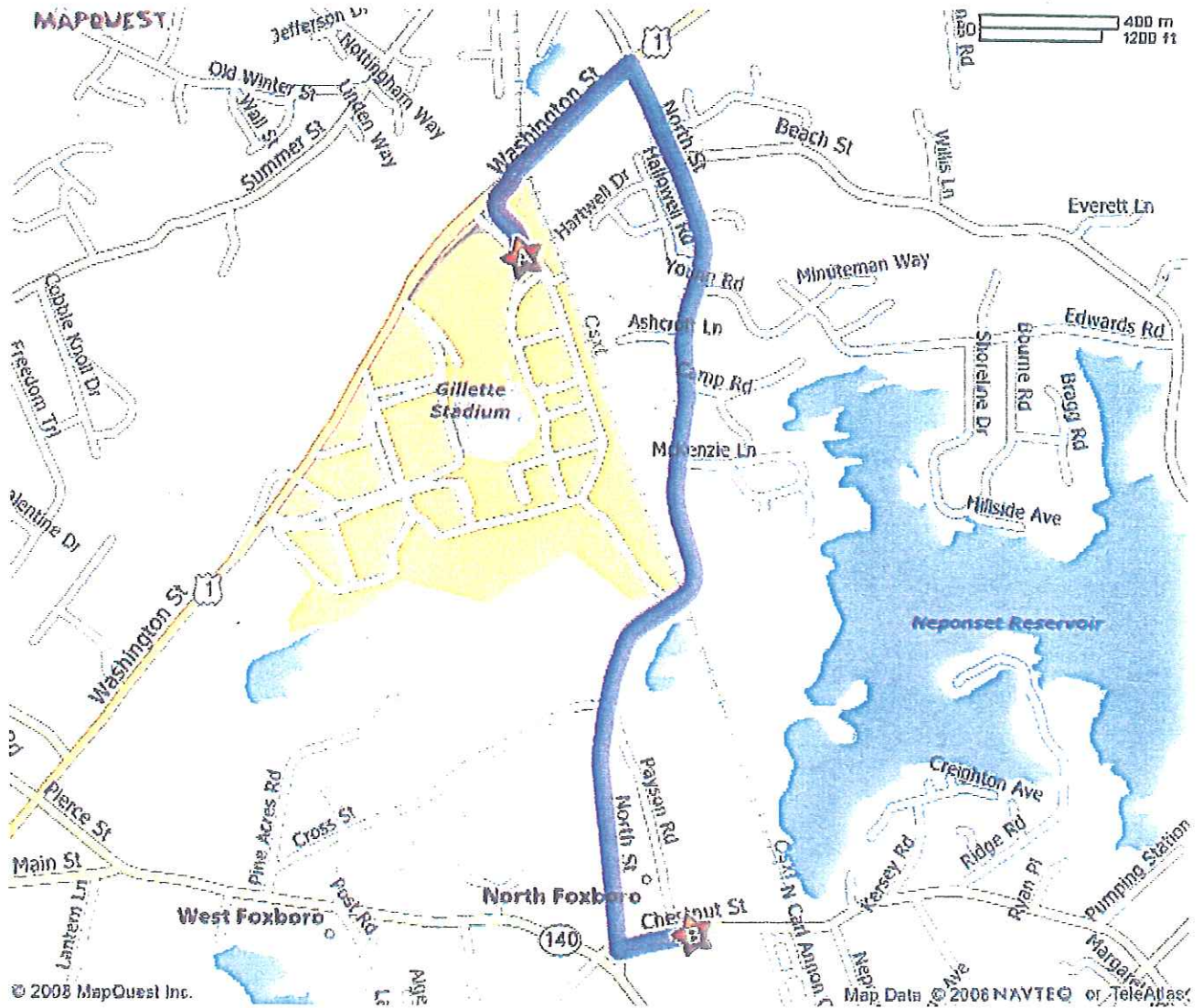


FIRST FLOOR





# Directions from Gillette Stadium To 29 Chestnut Street, Foxboro, MA



## A: 1 Patriot Pl, Foxboro, MA 02035-1374



1: Merge onto WASHINGTON ST/US-1.

0.5 mi



2: Turn RIGHT onto NORTH ST.

2.0 mi



3: Turn LEFT onto CHESTNUT ST.

0.1 mi



4: End at 29 Chestnut St Foxboro, MA 02035-1442

Estimated Time: 6 minutes

Estimated Distance: 2.70 miles

## B: 29 Chestnut St, Foxboro, MA 02035-1442

Total Time: 6 minutes

Total Distance: 2.70 miles